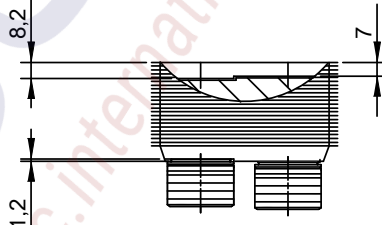
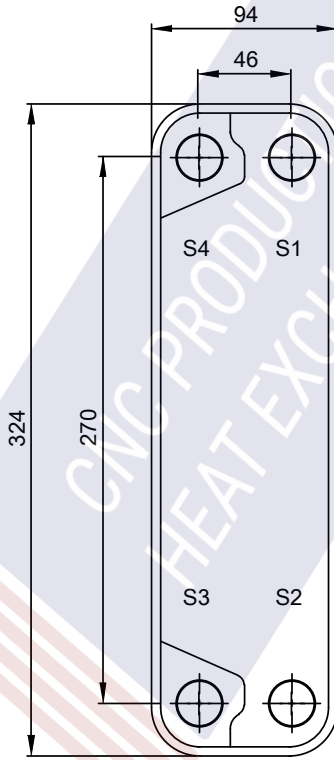
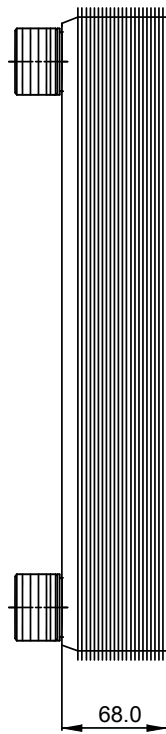
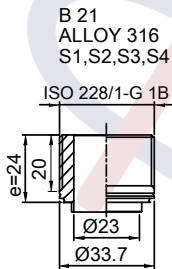


Note that all unique customer requirements (i.e tolerance) need to be verified thru Alfa Laval.



Frameplate is depressed 1.2 mm at connection S3/S4  
Pressureplate is depressed 1.2 mm / even number of channel  
plates at connections T3/T4 / uneven number of channel plates at  
connections T1/T2.

T1 T2 T3 T4 locations on back side  
correspond to S1 S2 S3 S4 on front side

HEATING SURFACE m<sup>2</sup>  
NETWEIGHT 4.1 kg  
OPERATING WEIGHT kg  
PLATE MATERIAL ALLOY 316  
PLATE GROUPING 1\*19H/1\*20H

ALL DIMENSIONS IN MILLIMETERS

SIDE	MEDIA	INLET	TEMP. °C	OUTLET	TEMP. °C	FLOW RATE	PRESSURE DROP	LIQUID VOL.
1	Water	S1	°C	S2	°C	kg/h	kPa	0.6 dm <sup>3</sup>
2	Water	S3	°C	S4	°C	kg/h	kPa	0.5 dm <sup>3</sup>

PRESSURE VESSEL APPROVAL

PED

CB20-40H (3287000016)

www.alfalaval.com

CUSTOMER NAME / REF. NO.

TOTAL LENGTH 92 mm  
TOTAL WIDTH 94 mm  
TOTAL HEIGHT 324 mm

COMPANY / REF.  
Aptec production s.r.o.

7/8/2020  
REV 0